

# Old Woodward Ave & W Maple Road

## Streetscape Design

Presentation | February 2, 2017



**PARSONS**

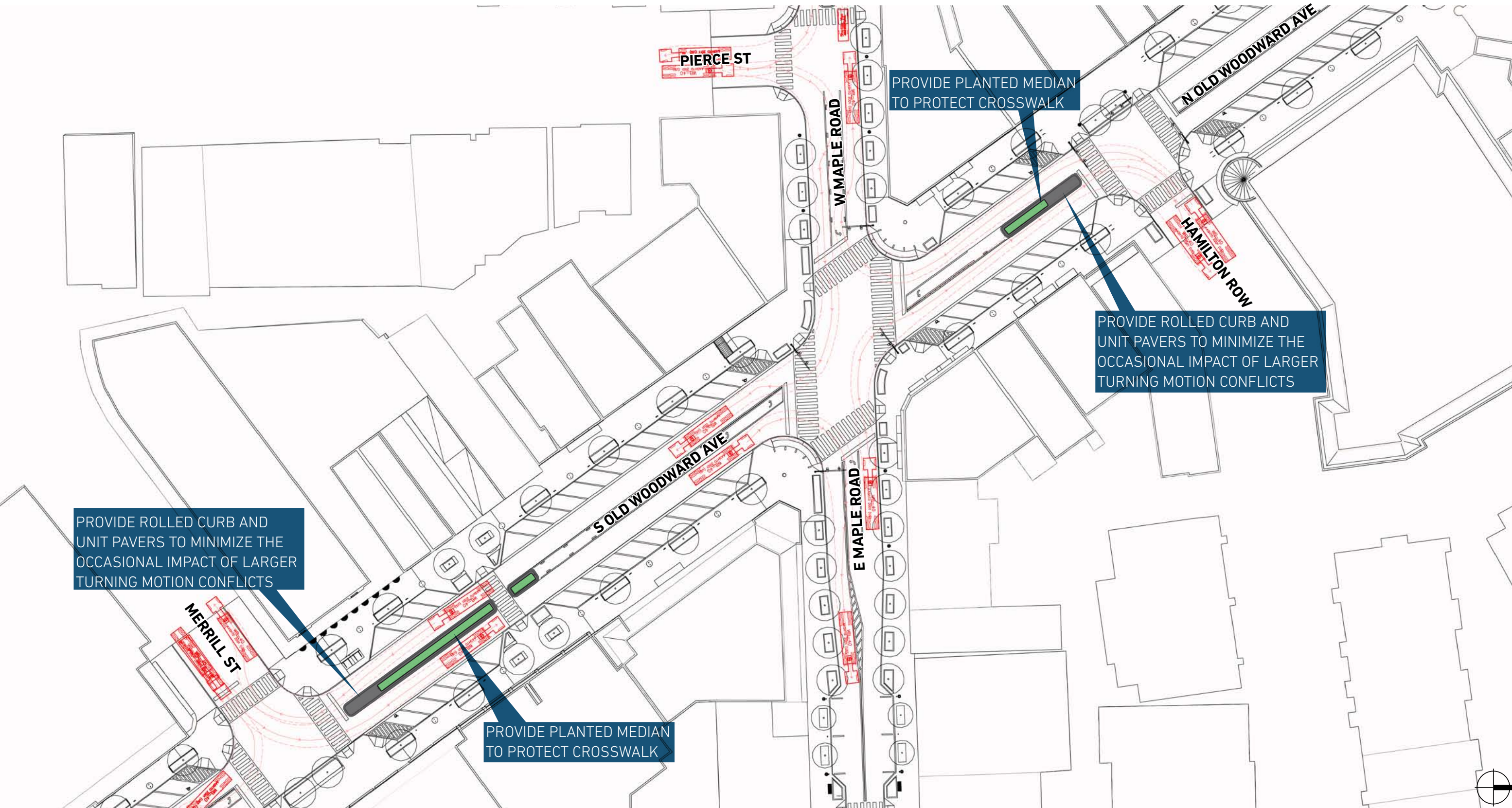
**MKSK**

# Revisions To The Design Concept Per The City Commission

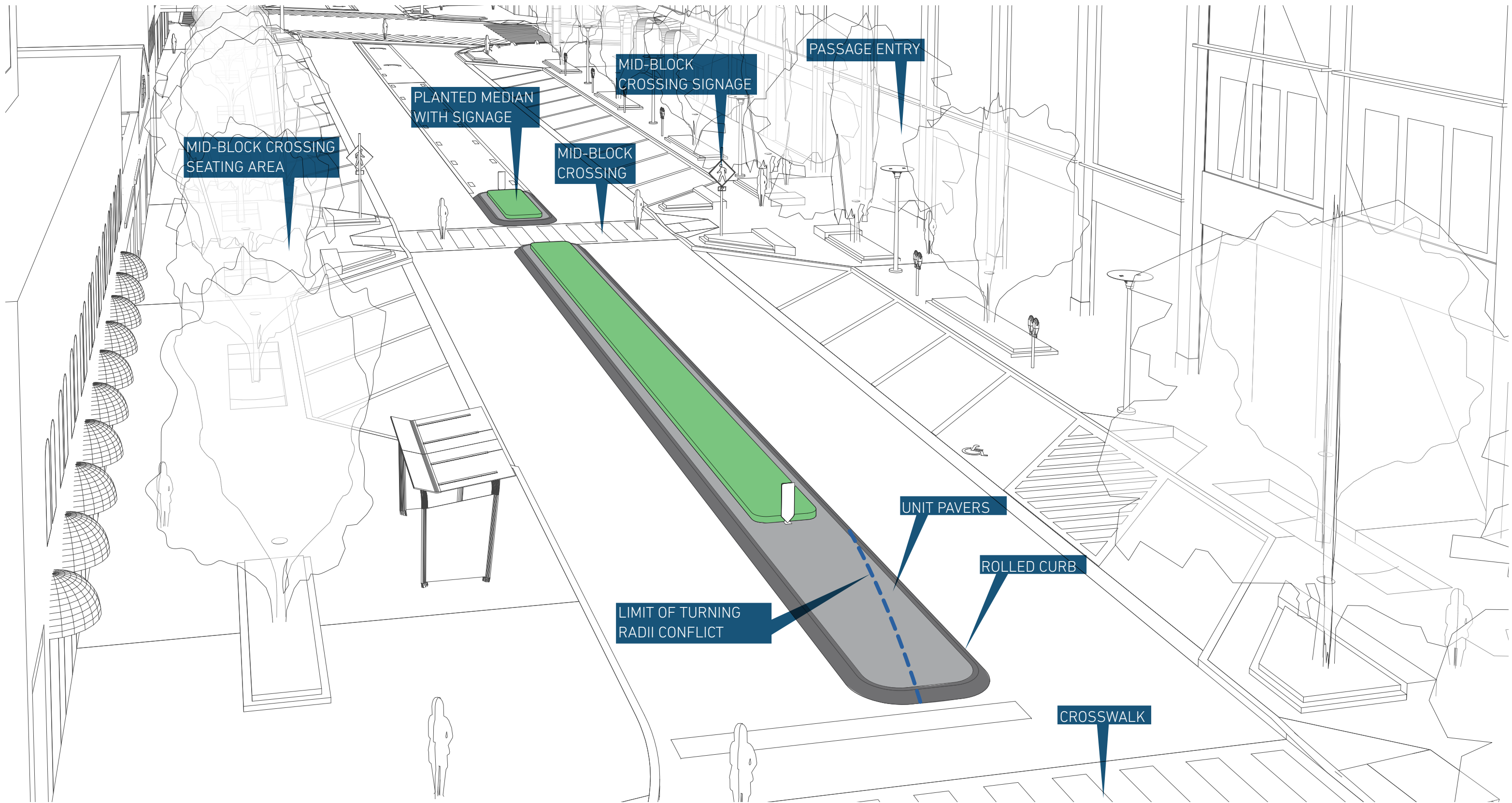
- » Add planted medians to Old Woodward Ave center turn lane; Hamilton Row & Old Woodward Ave, Merrill Street & Old Woodward Ave
- » Add protective median islands where possible at crossings to protect pedestrians; Maple Road & Pierce Street (alley access)
- » Relocate mid-block pedestrian crossing at East Maple to the Cafe Via passage
- » Study the possibilities of narrowing Old Woodward mid-block crossing to add parking



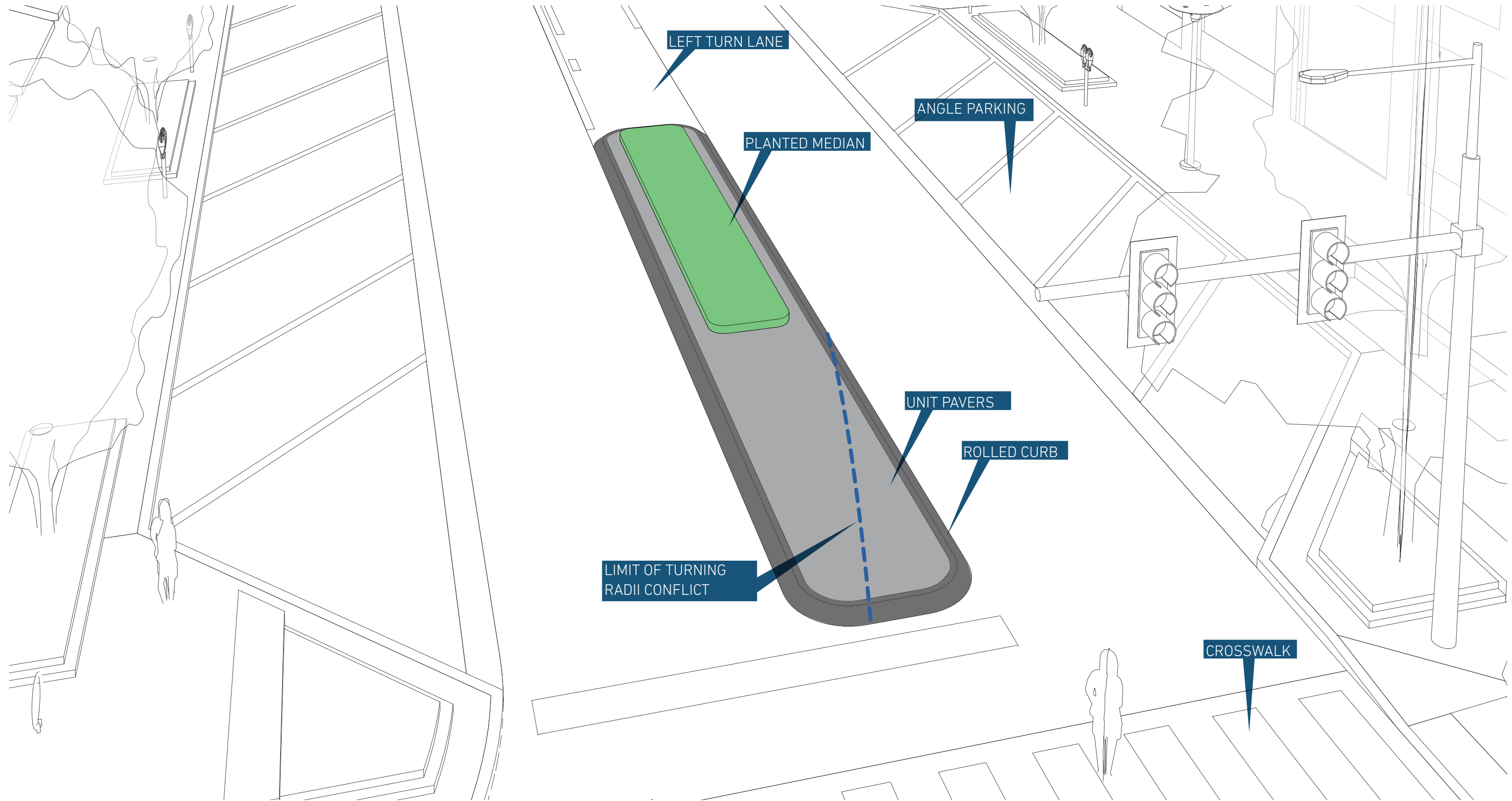




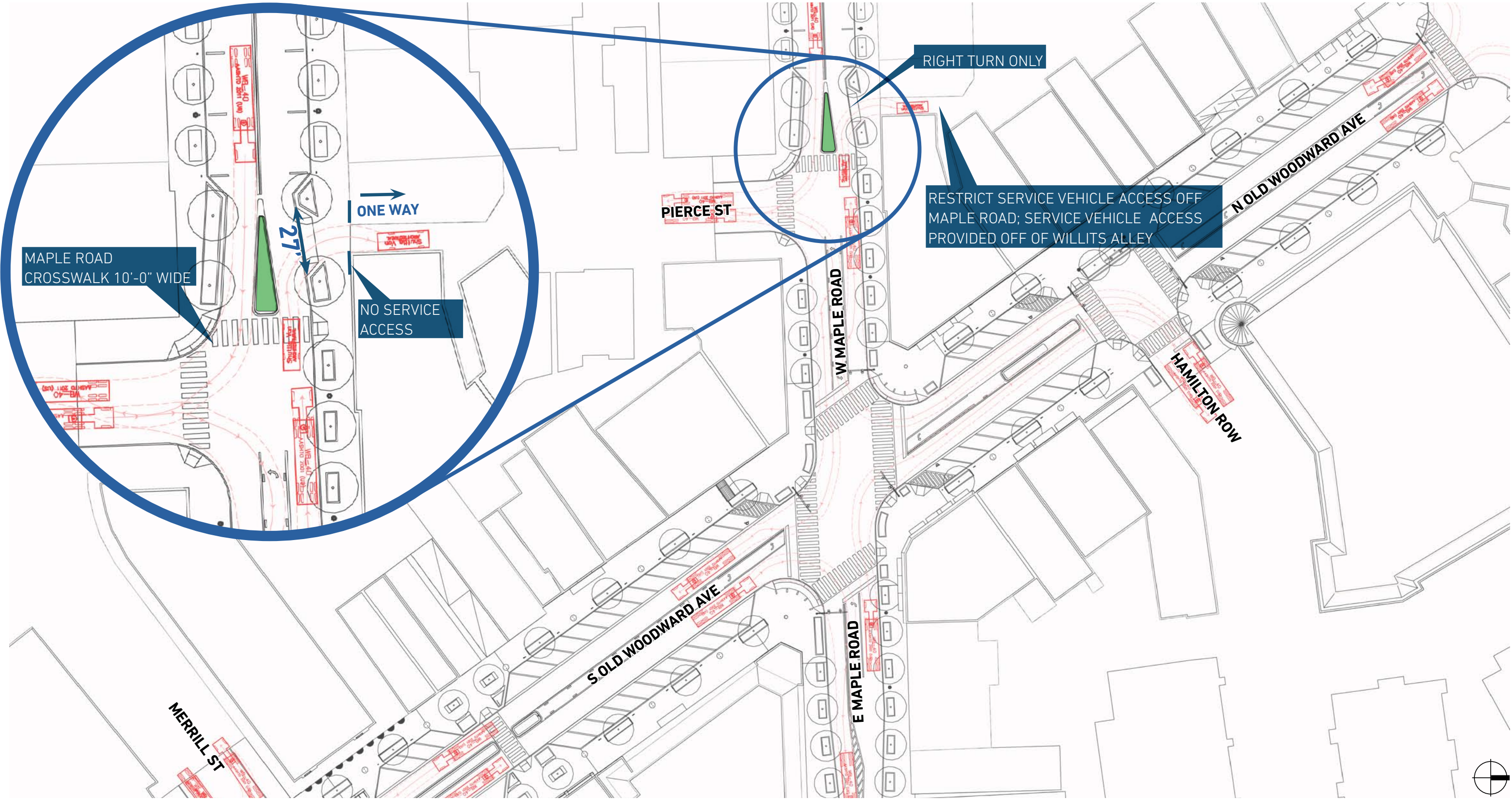




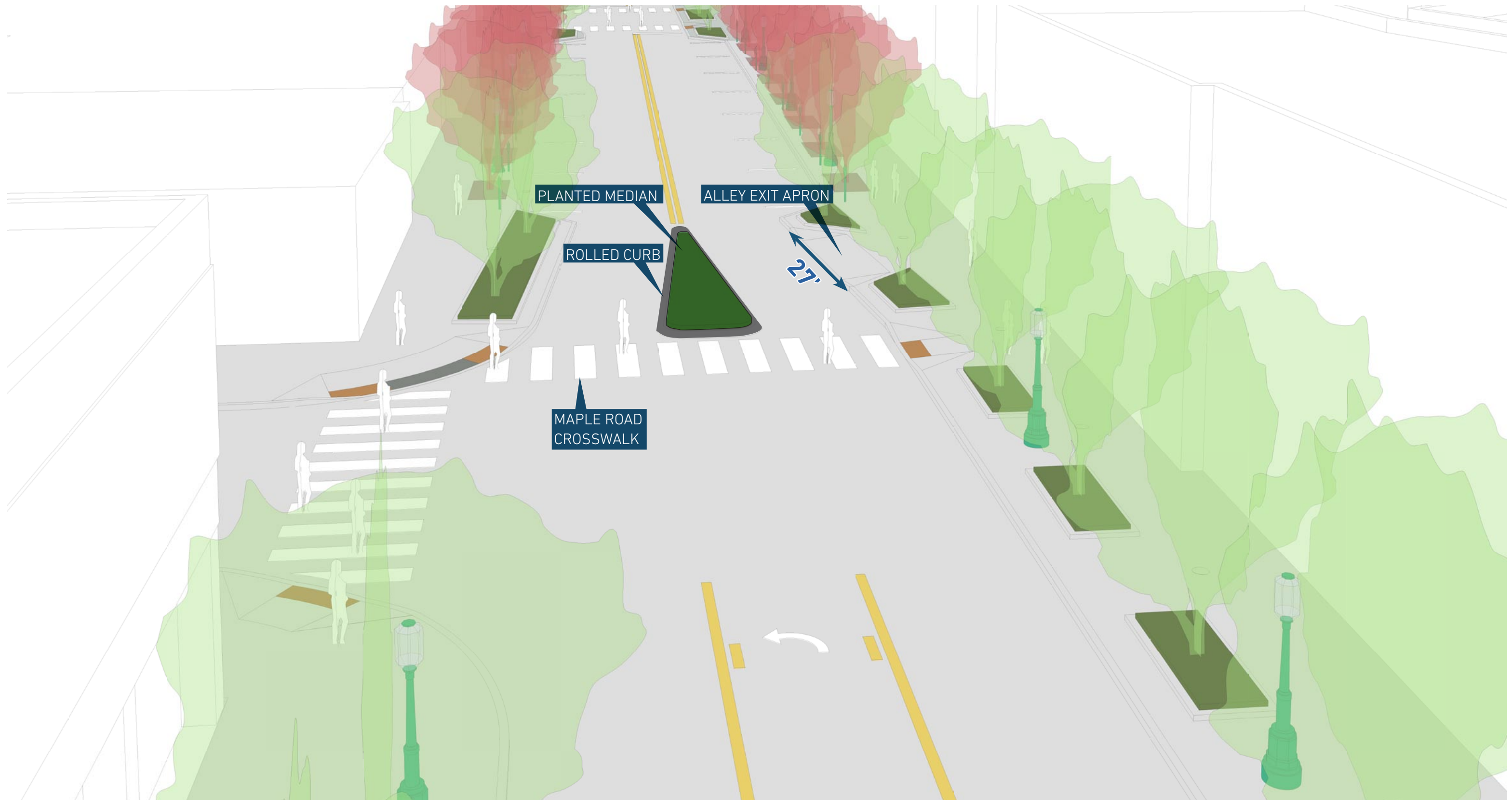


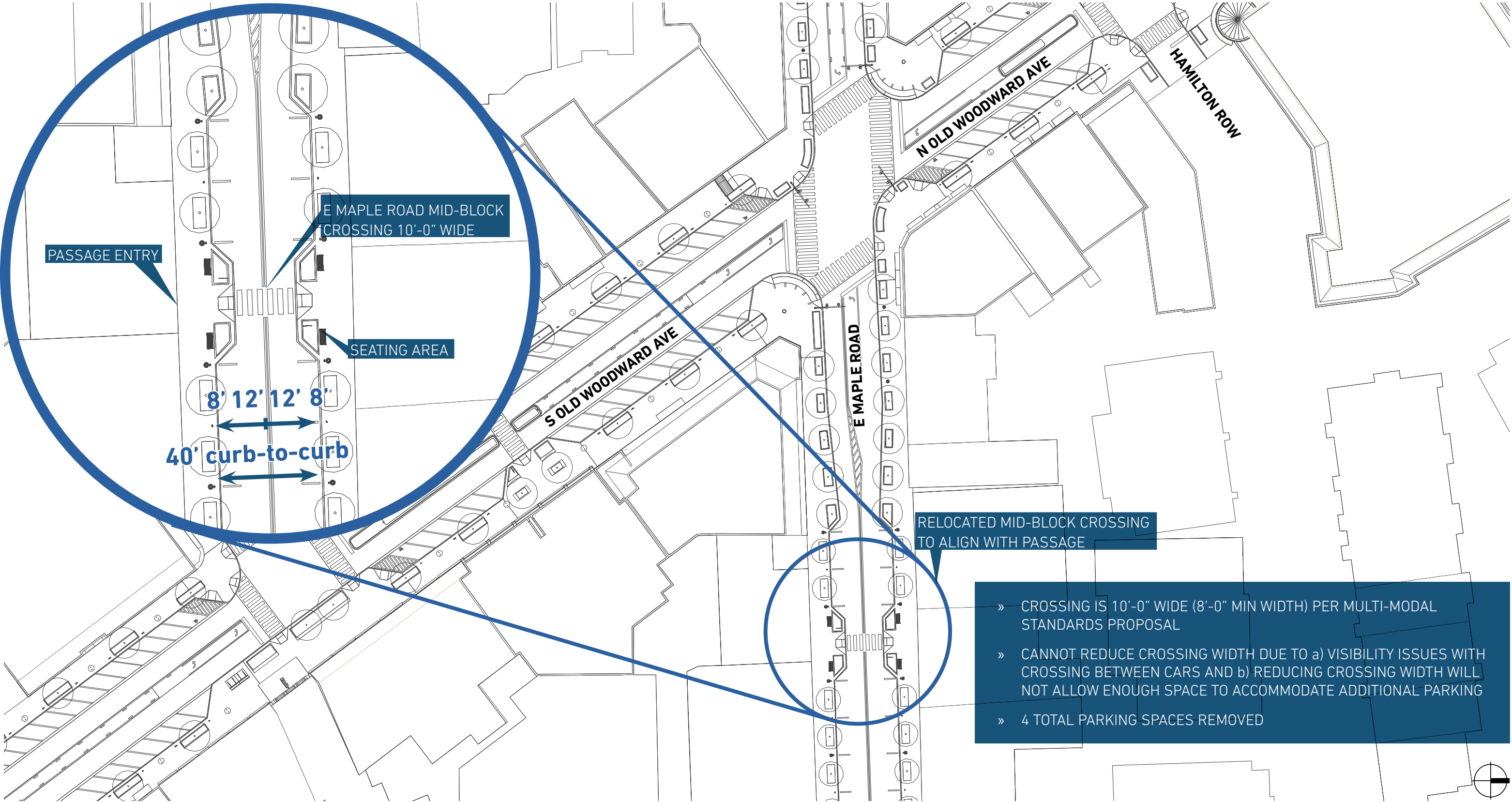






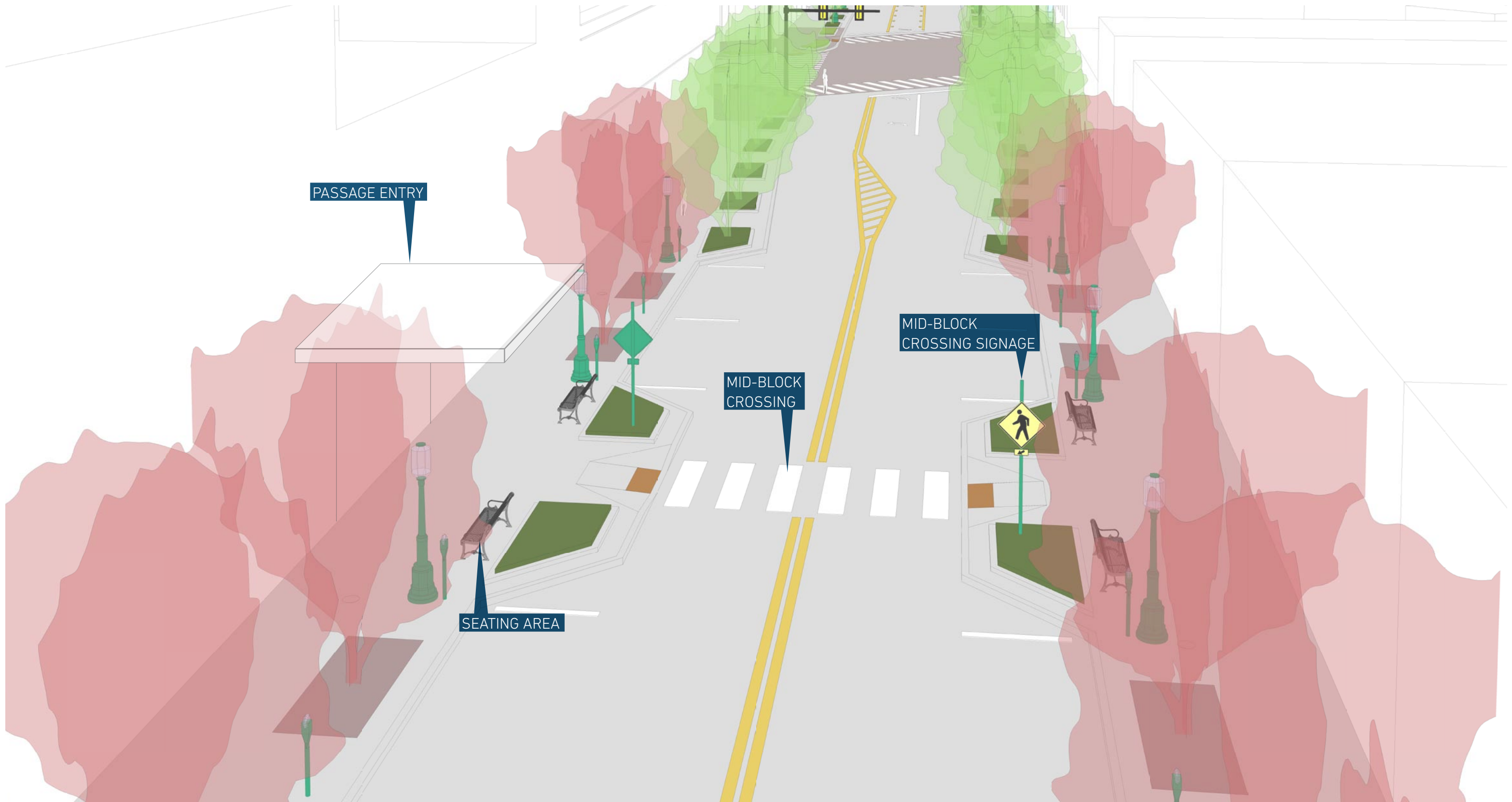


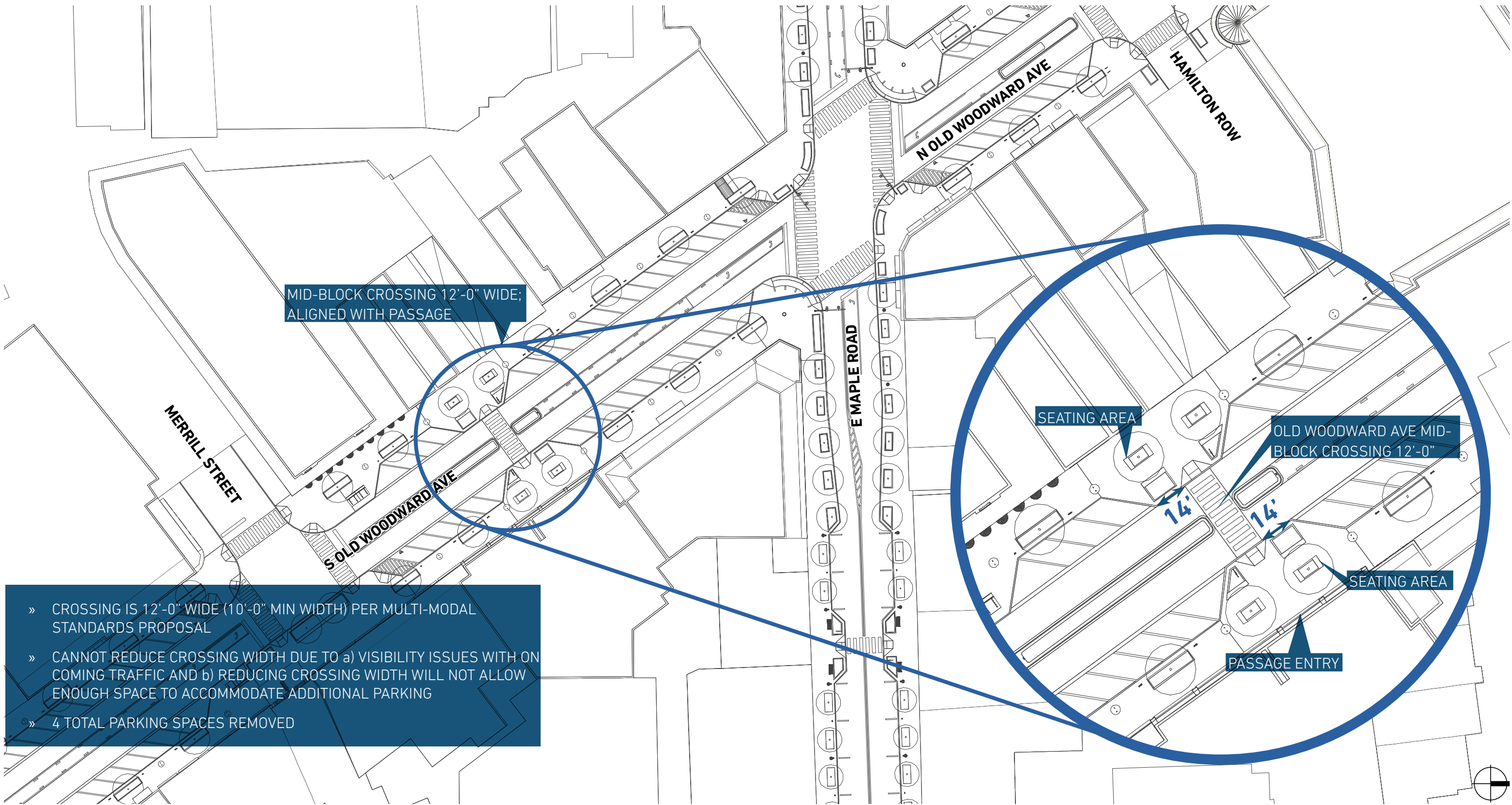




- » CROSSING IS 10'-0" WIDE (8'-0" MIN WIDTH) PER MULTI-MODAL STANDARDS PROPOSAL
- » CANNOT REDUCE CROSSING WIDTH DUE TO a) VISIBILITY ISSUES WITH CROSSING BETWEEN CARS AND b) REDUCING CROSSING WIDTH WILL NOT ALLOW ENOUGH SPACE TO ACCOMMODATE ADDITIONAL PARKING
- » 4 TOTAL PARKING SPACES REMOVED







- » CROSSING IS 12'-0" WIDE (10'-0" MIN WIDTH) PER MULTI-MODAL STANDARDS PROPOSAL
- » CANNOT REDUCE CROSSING WIDTH DUE TO a) VISIBILITY ISSUES WITH ON COMING TRAFFIC AND b) REDUCING CROSSING WIDTH WILL NOT ALLOW ENOUGH SPACE TO ACCOMMODATE ADDITIONAL PARKING
- » 4 TOTAL PARKING SPACES REMOVED





- » Next Steps
  - > Design Study Directs Final Engineering Process
  - > Design Adjusted to accurate site survey, not changed
  - > Documentation for Bidding (with alternates) & construction
  - > “The Devil is in the Details” - many fine-grain items still need to be resolved (i.e. paving markings, signage location, construction details & specifications)
  - > Many Landscape Architecture Elements to be Fully Developed (i.e. hardscape material selection & details, plant selection & soils, fine grading & site furniture locations)